

Beacon

Commercial Real Estate, LLC

OFFICE SPACE AVAILABLE FOR LEASE



**1000 CONSHOHOCKEN ROAD
CONSHOHOCKEN, PA**



BUILDING INFORMATION:

- **1,748 RSF, Second Floor Space**
- Directory Signage Available
- Building Common Area Kitchen & Conference Room
- Rental Rate: **\$22.00 + \$2.50 (Tax & Utilities)**
- Two-story Building Totaling 11,146 SF
- Upgraded Finishes Throughout (9' Finished Ceilings)
- Conveniently located by I-476, I-276 and Ridge Pike

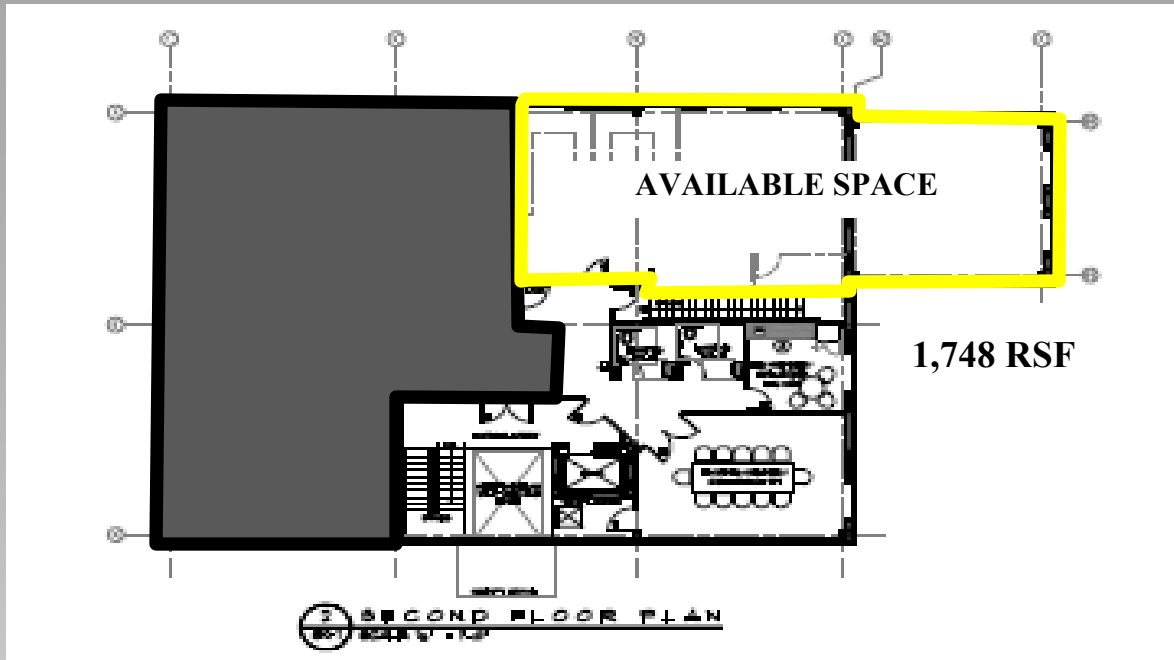
**FOR INFORMATION,
CONTACT:**

COLIN McHALE
cmchale@beaconcre.com

610.828.0100

Office Available For Lease

1000 CONSHOHOCKEN ROAD



290 King of Prussia Road Building 1, Suite 200 Radnor, PA 19087
610.828.0100 Tel 610.828.3873 Fax www.beaconcre.com

No warranty or representation, expressed or implied, is made as to the accuracy of the information contained herein, and same is submitted subject to errors, omissions, change of price, rental or other conditions, withdrawal without notice, and to any special listing conditions imposed by our principals.