

Beacon

Commercial Real Estate, LLC



MANAYUNK LOFT OFFICE SPACE



3901 Main Street • Philadelphia, PA 19127

- 5,118 RSF Loft Office Space available for lease
- Sub dividable to as small as 1,000 SF
- High ceilings with exposed beams
- Lots of natural light-skylights and windows
- Storage space available at low rates
- Enjoy the many amenities of Manayunk: Restaurants, Retail & Banking
- Minutes from Center City and Conshohocken
- Off-street Parking Available

**FOR MORE INFORMATION,
CONTACT:**

JIM DiBIANCA
jdibianca@beaconcre.com

JERE SHERTZER
jshertzer@beaconcre.com

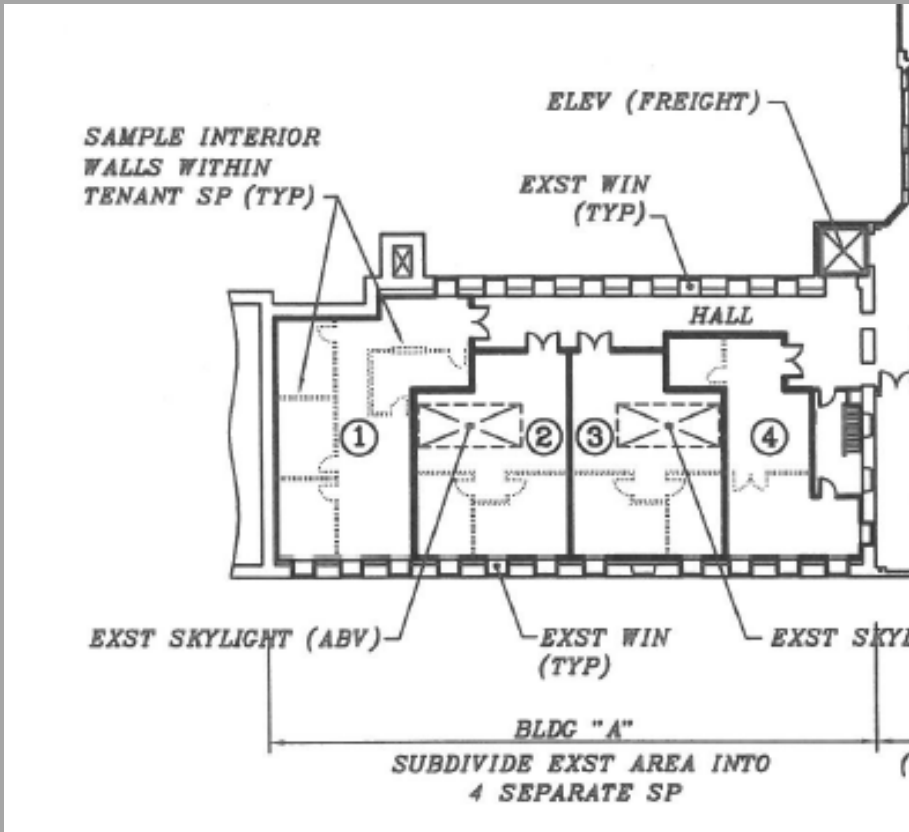
610.828.0100

No warranty or representation, expressed or implied, is made as to the accuracy of the information contained herein, and same is submitted subject to errors, omissions, change of price, rental or other conditions, withdrawal without notice, and to any special listing conditions, imposed by our principals.

290 KING OF PRUSSIA ROAD • BUILDING 1, SUITE 200 • RADNOR, PA 19087

PHONE: 610.828.0100 • FAX: 610.828.3873

WWW.BEACONCRE.COM



3901-B MAIN STREET MANAYUNK PHILADELPHIA, PA	DETAILED FLOOR PLANS • ROOMINDERS • REAL ESTATE MARKETING	APPROXIMATE SQUARE FEET
	P 610-459-4213 WWW.WEBSITEADDRESS.COM F 610-459-8118	LICENSED BY THE STATE OF PENNSYLVANIA
	* All measurements may vary * Not to be used for construction purposes	* Only to be used with written permission
	* Placement of walls and fixtures are approximate	

SUITE B-304

