

Beacon

Commercial Real Estate, LLC

**OFFICE / RETAIL
AVAILABLE FOR SUBLEASE**



4026 MAIN STREET • PHILADELPHIA, PA 19127

BUILDING FEATURES:

- Stand alone 4,000 SF office / retail
- All the amenities of Manayunk
- Easy access to Center City & Philadelphia Suburbs
- Recently built-out interior
- Low cost adjacent parking & abundance of off-street parking
- Rate: \$15.00/SF NNN

**FOR MORE INFORMATION,
CONTACT:**

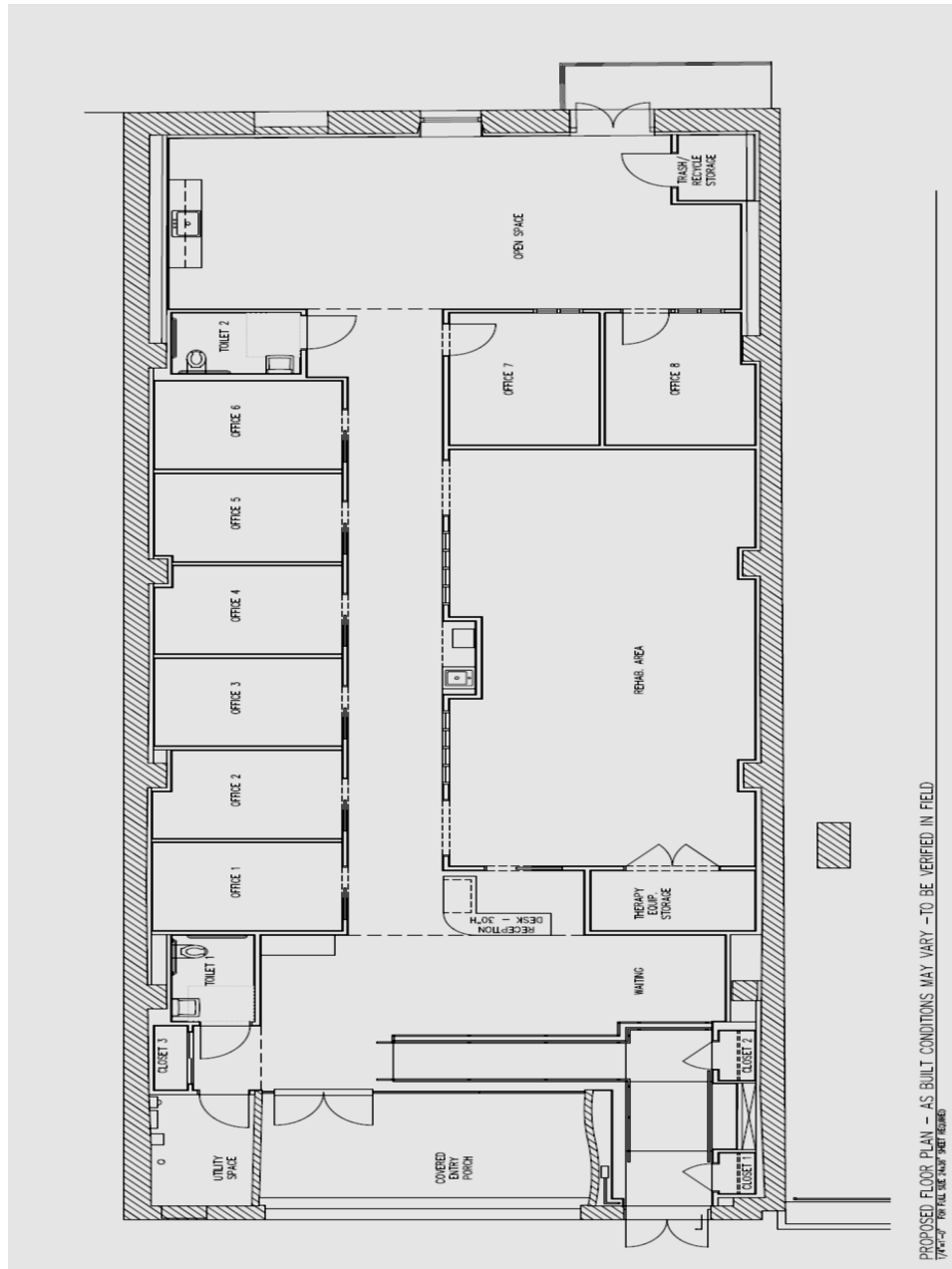
JIM DiBIANCA
jdibianca@beaconcre.com

JERE SHERTZER
jshertzer@beaconcre.com
610.828.0100

Beacon

Commercial Real Estate, LLC

4026 MAIN STREET • PHILADELPHIA, PA 19127



CONTACT:

JIM DiBIANCA

jdibianca@beaconcre.com

JERE SHERTZER

jshertzer@beaconcre.com