

Beacon

Commercial Real Estate, LLC

OFFICE SPACE AVAILABLE



1000 W. 9TH AVENUE • KING OF PRUSSIA, PA 19406

PROPERTY HIGHLIGHTS:

- **3,308 RSF Available**
- **Rent: \$21.00 + Electric**
- Separately Metered
- 3 Sides of Glass
- Executive Layout
 - 4 Offices
 - Restroom in Suite
 - Conference Room (14 x 15)
 - Open Area for 10-12 Cubes
- **Available: November 1, 2018!**

For information, contact:

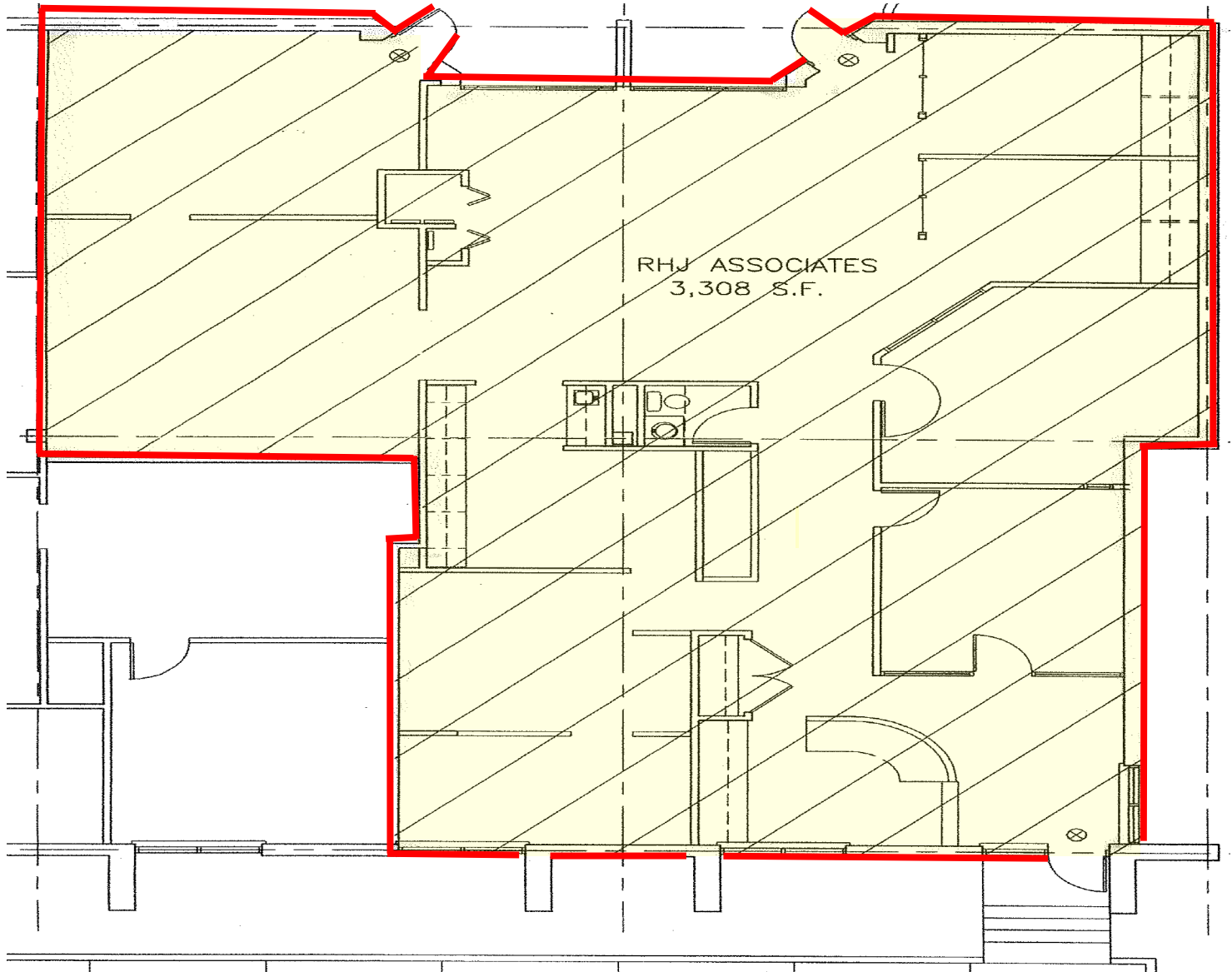
Colin McHale
cmchale@beaconcre.com

610.828.0100

Beacon

Commercial Real Estate, LLC

1000 W. 9TH AVENUE • KING OF PRUSSIA, PA 19406



3,308 RSF