

AVAILABLE FOR LEASE 10 SHURS LANE • PHILADELPHIA



PROPERTY HIGHLIGHTS:

- Exposed brick walls / high ceilings
- Located just off Main Street in Manayunk
- Private parking available
- SEPTA bus and regional rail within walking distance
- Main Street, Manayunk amenities nearby - restaurants, retail shops, banking
- Two blocks from Ampitheatre
- Rental Rate: \$21.00SF + utilities & janitorial

AVAILABILITIES

7,901 SF
FIRST FLOOR

5,964 SF
THIRD FLOOR

Jim Dibianca jdibianca@beaconcre.com | **610.828.0100**

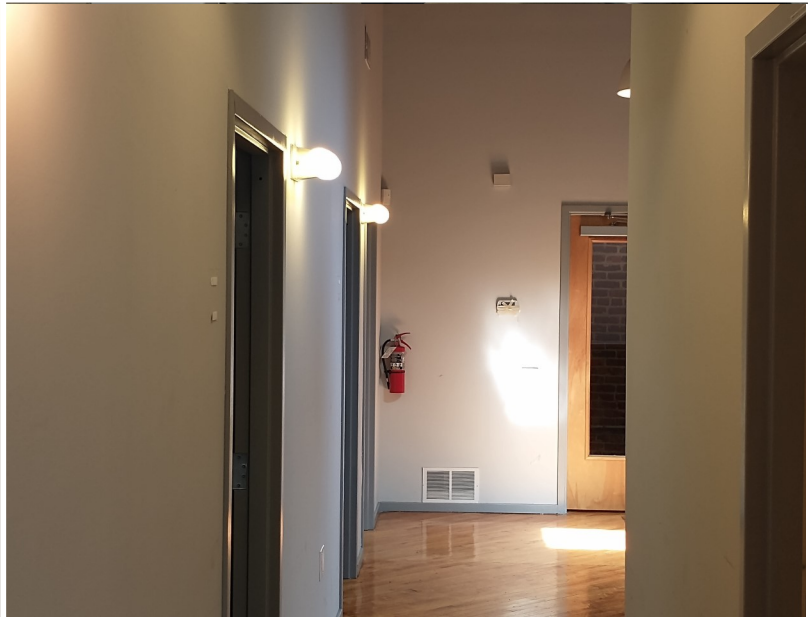
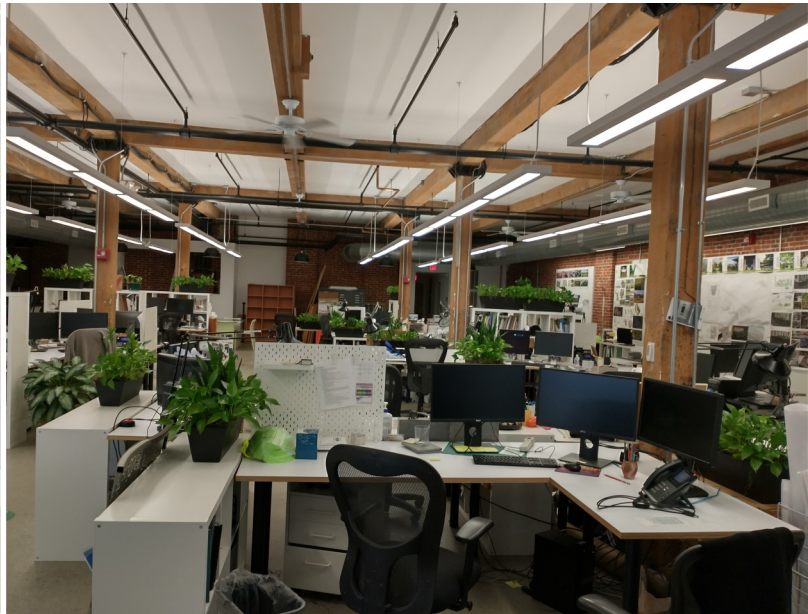
290 King of Prussia Road | Building 1 | Suite 200 | Radnor, PA 19087 | 610.828.0100 (o) | 610.828.3873 (f) | www.beaconcre.com

No warranty or representation, expressed or implied, is made as to the accuracy of the information contained herein, and same is submitted subject to errors, omissions, change of price, rental or other conditions, withdrawal without notice, and to any special listing conditions imposed by our principals.

Beacon

Commercial Real Estate, LLC

AVAILABLE FOR LEASE 10 SHURS LANE • PHILADELPHIA



Jim Dibianca jdibianca@beaconcre.com | **610.828.0100**

290 King of Prussia Road | Building 1 | Suite 200 | Radnor, PA 19087 | 610.828.0100 (o) | 610.828.3873 (f) | www.beaconcre.com

No warranty or representation, expressed or implied, is made as to the accuracy of the information contained herein, and same is submitted subject to errors, omissions, change of price, rental or other conditions, withdrawal without notice, and to any special listing conditions imposed by our principals.