

Beacon

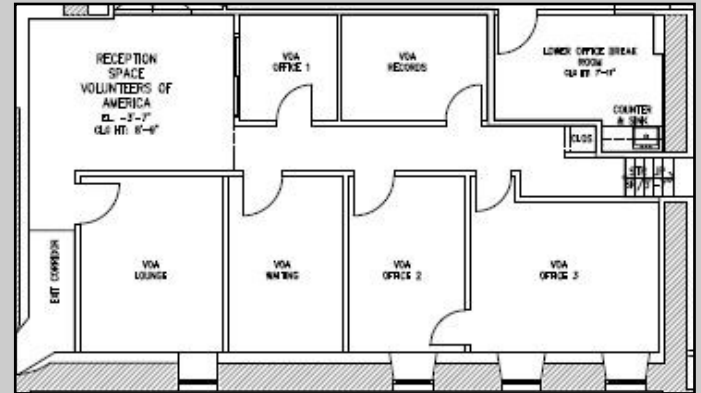
Commercial Real Estate, LLC



MANAYUNK OFFICE SPACE FOR LEASE



1,434 SF Retail/Office



Layout 1,100 SF of Office

3901 Main Street, Philadelphia, PA 19127

- 1,434 SF Ground Floor Retail/Office
\$15.00 psf+ electric & janitorial Available 3/2020
- 1,100 SF Office \$15.50 psf + electric & janitorial
- 8,500 SF Shell Loft Office—Build to Suit, Divisible
- 1539 SF ground floor retail/office with access to delivery bay drive.
\$15.00 psf. (Can be combined with 1,434 SF space for a total of 2,973 sf)
- Enjoy the many amenities of Manayunk: Restaurants, Retail & Banking
- Minutes from Center City and Conshohocken
- Off-street Parking Available

**FOR MORE INFORMATION,
CONTACT:**

JIM DiBIANCA
jdibianca@beaconcre.com

JERE SHERTZER
jshertzer@beaconcre.com

610.828.0100

No warranty or representation, expressed or implied, is made as to the accuracy of the information contained herein, and same is submitted subject to errors, omissions, change of price, rental or other conditions, withdrawal without notice, and to any special listing conditions, imposed by our principals.

290 KING OF PRUSSIA ROAD • BUILDING 1, SUITE 200 • RADNOR, PA 19087
PHONE: 610.828.0100 • FAX: 610.828.3873
WWW.BEACONCRE.COM