

# Beacon

Commercial Real Estate, LLC

## AVAILABLE FOR LEASE



**375 E. ELM STREET • CONSHOHOCKEN, PA 19428**  
*Best Value in Conshohocken!*

- 31,600 SF, Two-Story Class “A” Office Building
- 3,725 Rentable SF available on 2nd floor
- Parking Ratio: 4.2 spaces per 1,000 SF
- Rental Rate: \$27.50 + Utilities
- Excellent Conshohocken Location
- Walkable to both Conshohocken and Spring Mill Train Station
- Walkable into town with multiple amenities, across the street from Cerdo’s and Peppercini’s restaurants

***For Information, Contact:***

**GENE MCHALE**  
[gmchale@beaconcre.com](mailto:gmchale@beaconcre.com)

**COLIN MCHALE**  
[cmchale@beaconcre.com](mailto:cmchale@beaconcre.com)

**610.828.0100**

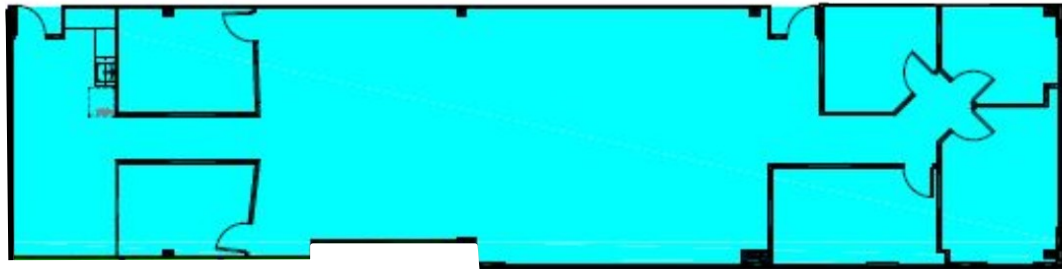
***Owned by:***



**HAVERFORD  
PROPERTIES**

**3,725 SF AVAILABLE**

**2nd FLOOR**



**3,725 RSF**  
**Coming Available July 2018**

***For Information, Contact:***

**GENE MCHALE**  
*gmchale@beaconcre.com*

**COLIN MCHALE**  
*cmchale@beaconcre.com*

**610.828.0100**