

375 E Elm Street, Conshohocken, PA

NEW OWNERSHIP!

- **3,725** Rentable SF available on 2nd floor
- Rental Rate: **\$29.00 + Utilities**
- **31,600 SF, Two-Story Class "A" Office Building**
- **Parking Ratio: 4.2 spaces per 1,000 SF**
- **Excellent Conshohocken Location**
- **Walkable to both Conshohocken and Spring Mill Train Station**
- **Walkable into town with multiple amenities, across the street from Cerdo's and Peppercini's restaurants**

For Information, Contact:

GENE MCHALE
gmchale@beaconcre.com

COLIN MCHALE
cmchale@beaconcre.com

610.828.0100

Owned by:



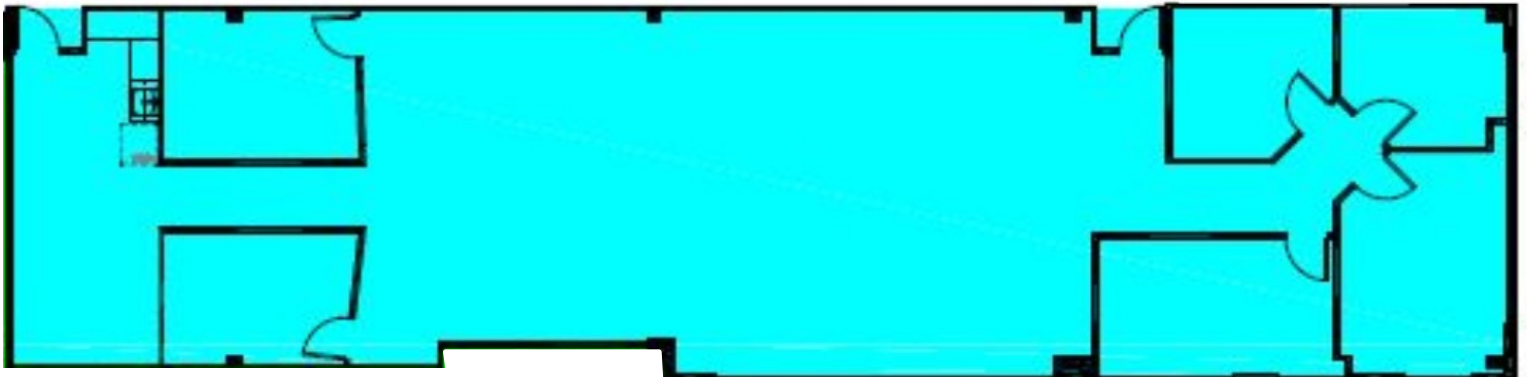
HUDSON
C O M P A N I E S

375 E Elm Street, Conshohocken, PA



3,725 SF AVAILABLE

2nd FLOOR



No warranty or representation, expressed or implied, is made as to the accuracy of the information contained herein, and same is submitted subject to errors, omissions, change of price, rental or other conditions, withdrawal without notice, and to any special listing conditions imposed by our principals.

Beacon
Commercial Real Estate, LLC