

Beacon

Commercial Real Estate, LLC

AVAILABLE FOR LEASE



780 W. LANCASTER AVENUE, BRYN MAWR, PA

- 22,878 SF, Two-Story Office Building
- 3,434 Rentable SF available
- Underground and above ground parking available
- Rental Rate: \$32.00 + Utilities
- Walkable to both Bryn Mawr Train Station
- Walkable into town with multiple amenities.



For Information, Contact:

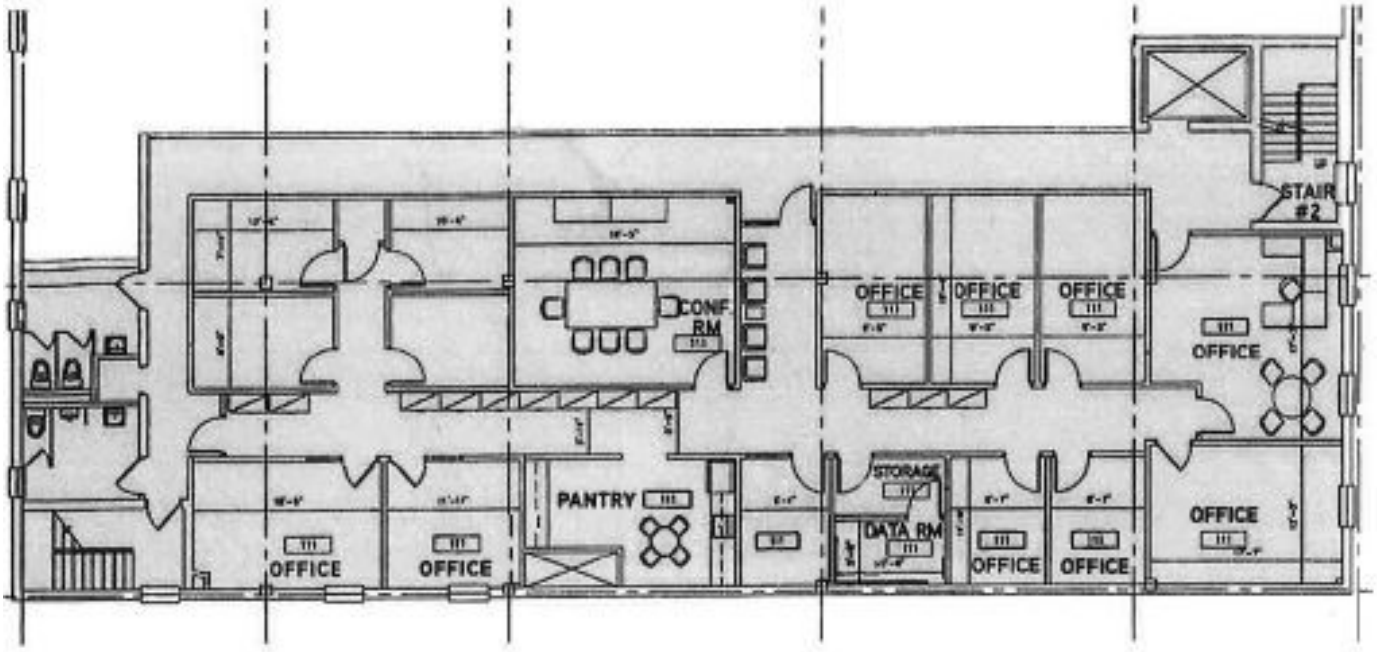
GENE MCHALE
gmchale@beaconcre.com

CHUCK SHIELDS
cshields@beaconcre.com

610.828.0100



3,434 SF AVAILABLE



Local Amenities

