

Beacon

Commercial Real Estate, LLC

OFFICE SPACE AVAILABLE FOR LEASE



**1000 CONSHOHOCKEN ROAD
CONSHOHOCKEN, PA**



BUILDING INFORMATION:

- **5,950 SF AVAILABLE 4/1/2021**
- Directory Signage Available
- Building Common Area Kitchen & Conference Room
- Rental Rate: **\$26.50 + \$2.50 (Tax & Utilities)**
- Two-story Building Totaling 11,146 SF
- Upgraded Finishes Throughout (9' Finished Ceilings)
- Conveniently located by I-476, I-276 and Ridge Pike

FOR INFORMATION, CONTACT:

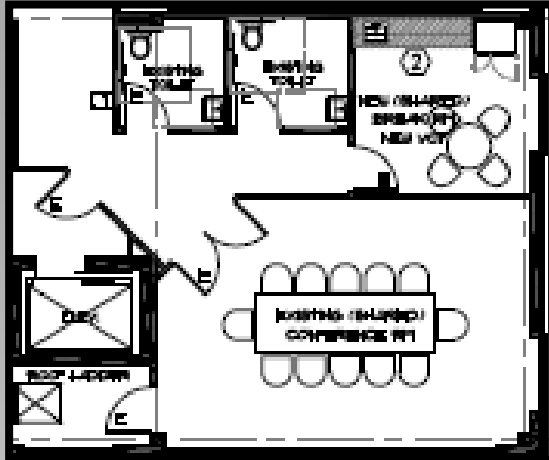
GENE McHALE
gmchale@beaconcre.com

COLIN McHALE
cmchale@beaconcre.com

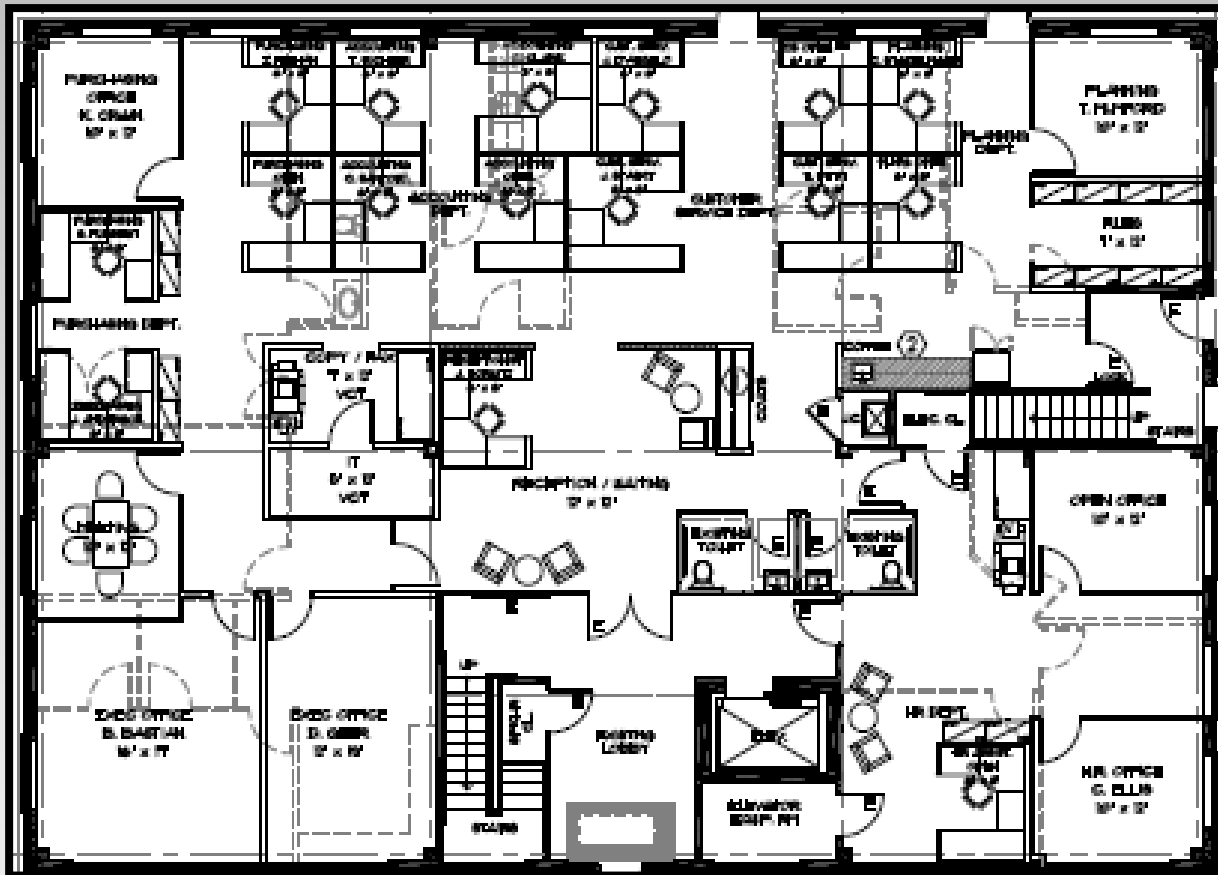
610.828.0100

Office Available For Lease

1000 CONSHOHOCKEN ROAD



SECOND FLOOR PLAN



FIRST FLOOR PLAN