

Beacon

Commercial Real Estate, LLC

1000 CONSHOHOCKEN RD • CONSHOHOCKEN, PA



OFFICE SPACE AVAILABLE FOR LEASE

- **858 SF, 1st Floor AVAILABLE IMMEDIATELY**
- Directory signage available
- Building common area kitchen & conference room
- Rental Rate: \$27.50 + \$2.50 (Tax, janitorial & utilities)
- Two-story building totaling 11,146 SF
- Upgraded finishes throughout (9' finished ceilings)
- Conveniently located by I-476, I-276 and Ridge Pike

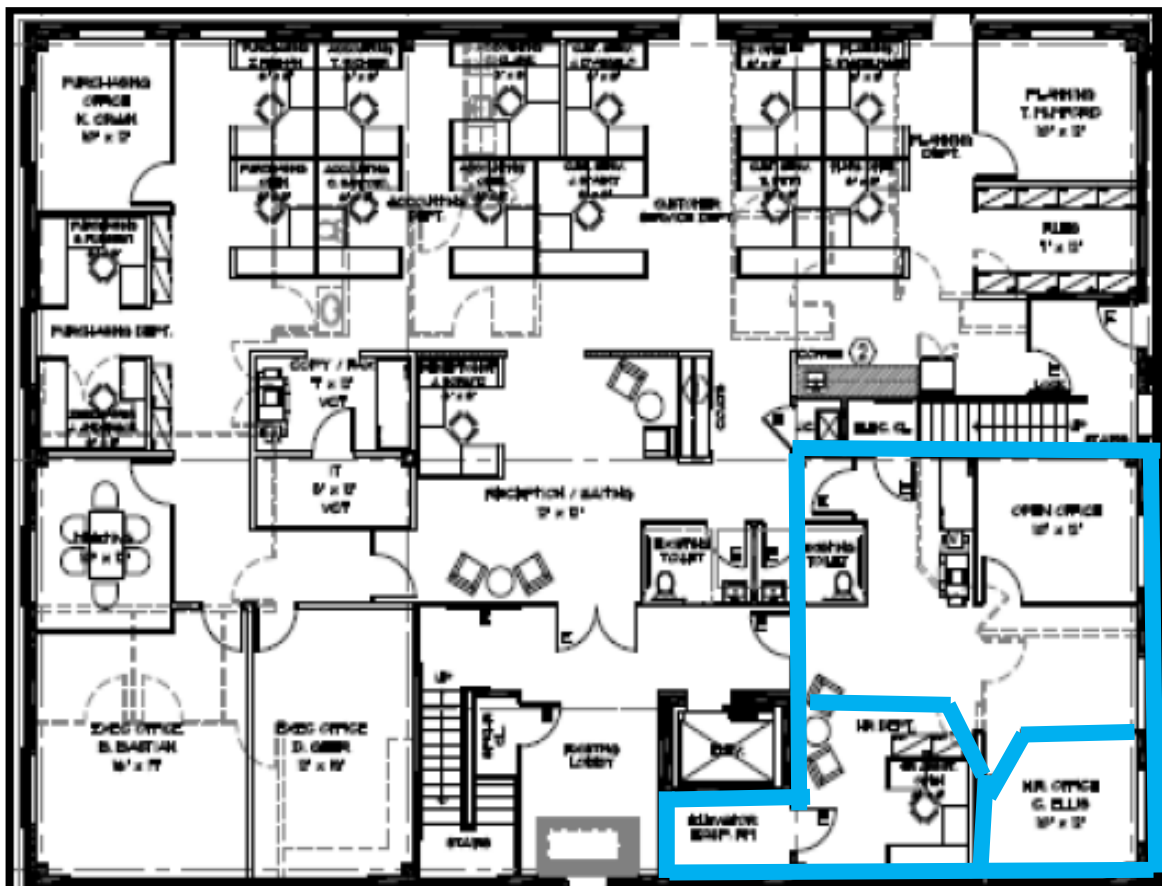
Gene McHale gmchale@beaconcre.com | **Colin McHale** cmchale@beaconcre.com | **610.828.0100**

290 King of Prussia Road | Building 1 | Suite 200 | Radnor, PA 19087 | 610.828.0100 (o) | 610.828.3873 (f) | www.beaconcre.com

No warranty or representation, expressed or implied, is made as to the accuracy of the information contained herein, and same is submitted subject to errors, omissions, change of price, rental or other conditions, withdrawal without notice, and to any special listing conditions imposed by our principals.

1000 CONSHOHOCKEN RD • CONSHOHOCKEN, PA

Available 858 SF



Gene McHale gmchale@beaconcre.com | **Colin McHale** cmchale@beaconcre.com | **610.828.0100**

290 King of Prussia Road | Building 1 | Suite 200 | Radnor, PA 19087 | 610.828.0100 (o) | 610.828.3873 (f) | www.beaconcre.com

No warranty or representation, expressed or implied, is made as to the accuracy of the information contained herein, and same is submitted subject to errors, omissions, change of price, rental or other conditions, withdrawal without notice, and to any special listing conditions imposed by our principals.