



MEDICAL SPACE FOR SUBLEASE TWO BALA PLAZA • BALA CYNWYD, PA

PROPERTY HIGHLIGHTS:

- 1,126 SF medical office space
- Sublease until 10/31/2022
- Great condition
- LEED certification at the Silver level
- In the heart of Bala Cynwyd—close by to many restaurants, banking & retail
- Less than 5 miles from Center City and only 10 miles from the Philadelphia International Airport
- Three bus lines and is close to the Bala Cynwyd and Overbrook stations of the SEPTA commuter line.

Gene McHale

gmchale@beaconcre.com

Colin McHale

cmchale@beaconcre.com

Chris Boylan

cboylan@beaconcre.com

Call 610.828.0100

Beacon

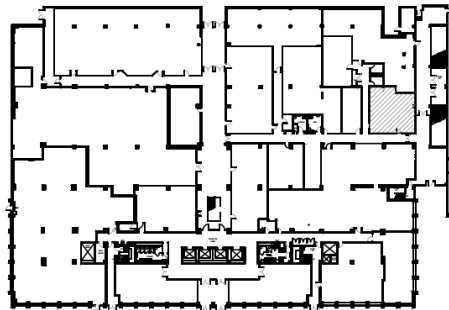
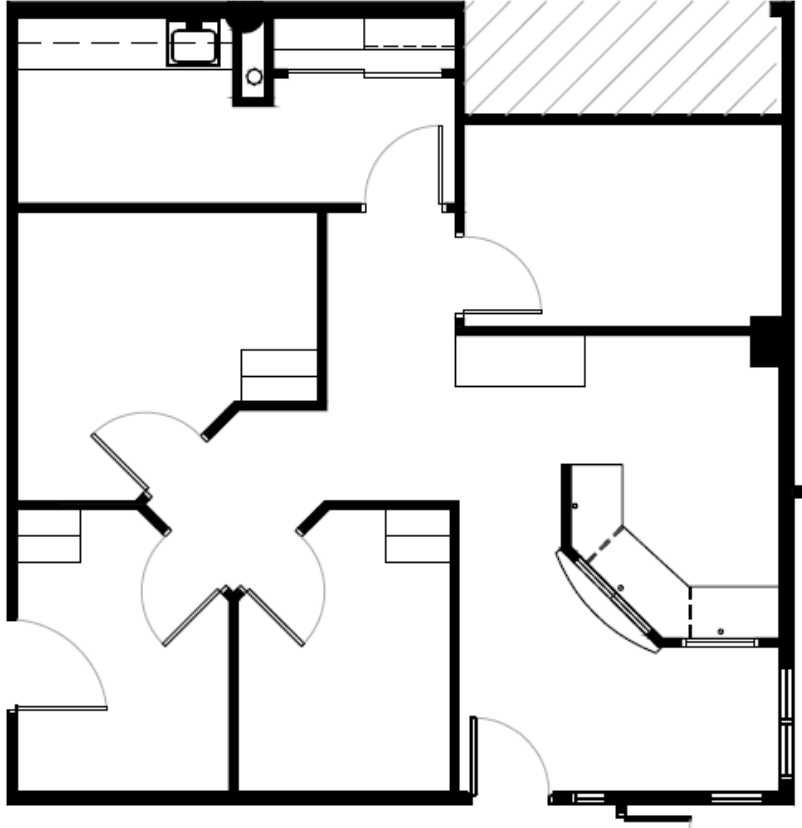
Commercial Real Estate, LLC

290 King of Prussia Road | Building 1 | Suite 200 | Radnor, PA 19087 | 610.828.0100 (o) | 610.828.3873 (f) | www.beaconcre.com

No warranty or representation, expressed or implied, is made as to the accuracy of the information contained herein, and same is submitted subject to errors, omissions, change of price, rental or other conditions, withdrawal without notice, and to any special listing conditions imposed by our principals.

MEDICAL SPACE FOR SUBLEASE TWO BALA PLAZA • BALA CYNWYD, PA

**1,126 SF
FOR SUBLEASE**



Key Plan
Not to Scale

Gene McHale gmchale@beaconcre.com | **Colin McHale** cmchale@beaconcre.com | **Chris Boylan** cboylan@beaconcre.com

290 King of Prussia Road | Building 1 | Suite 200 | Radnor, PA 19087 | 610.828.0100 (o) | 610.828.3873 (f) | www.beaconcre.com

No warranty or representation, expressed or implied, is made as to the accuracy of the information contained herein, and same is submitted subject to errors, omissions, change of price, rental or other conditions, withdrawal without notice, and to any special listing conditions imposed by our principals.