

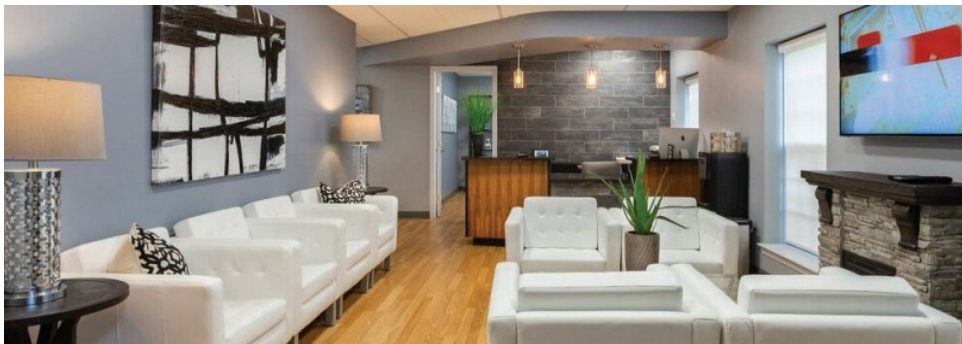
# PRIME MEDICAL OFFICE FOR LEASE 234 S. BRYN MAWR AVE • BRYN MAWR, PA

Renovations Underway!!!



## PROPERTY HIGHLIGHTS:

- First floor medical space — \$6,500/month + Utilities & Janitorial
- Second floor medical space — \$3,500/month + Utilities & Janitorial
- Abundant parking
- Ideal location for medical users—next door to Bryn Mawr Hospital
- Walking distance to Bryn Mawr Train Station & Wawa



**Beacon**  
Commercial Real Estate, LLC

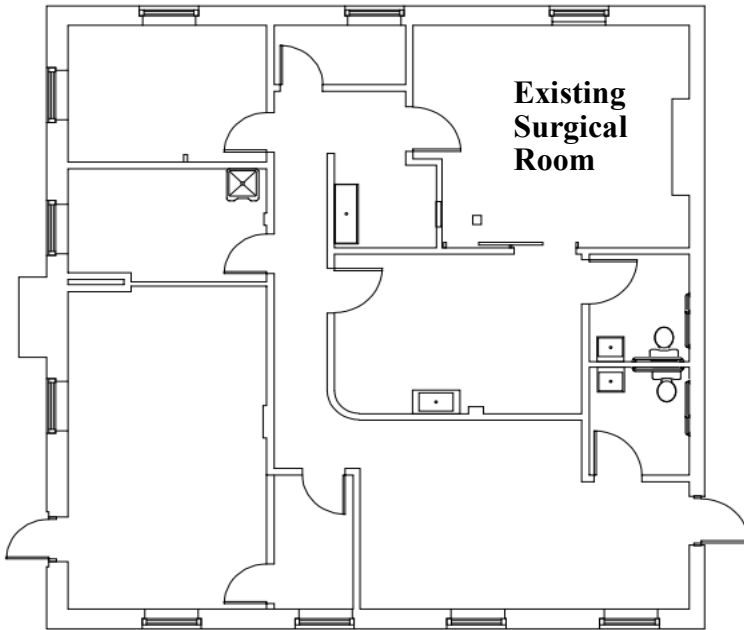
**Gene McHale** gmchale@beaconcre.com | **Colin McHale** cmchale@beaconcre.com | **610.828.0100**

290 King of Prussia Road | Building 1 | Suite 200 | Radnor, PA 19087 | 610.828.0100 (o) | 610.828.3873 (f) | www.beaconcre.com

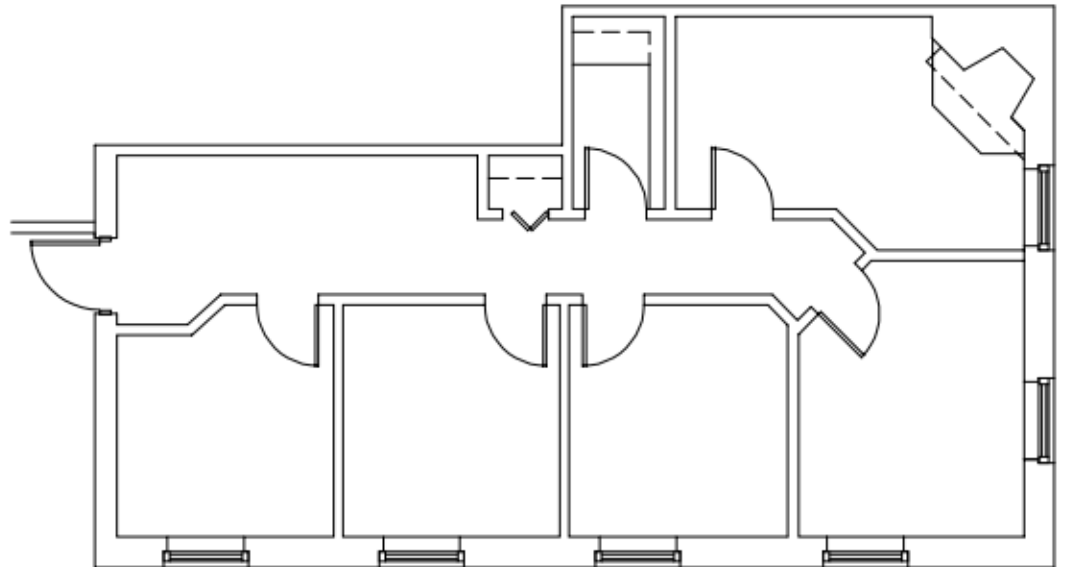
No warranty or representation, expressed or implied, is made as to the accuracy of the information contained herein, and same is submitted subject to errors, omissions, change of price, rental or other conditions, withdrawal without notice, and to any special listing conditions imposed by our principals.

## MEDICAL SPACE FOR LEASE 234 S. BRYN MAWR AVE • BRYN MAWR, PA

First floor plan—2,000 sq. ft.



Second floor plan—1,150 sq. ft.



**Gene McHale** gmchale@beaconcre.com | **Colin McHale** cmchale@beaconcre.com | **610.828.0100**

290 King of Prussia Road | Building 1 | Suite 200 | Radnor, PA 19087 | 610.828.0100 (o) | 610.828.3873 (f) | www.beaconcre.com

No warranty or representation, expressed or implied, is made as to the accuracy of the information contained herein, and same is submitted subject to errors, omissions, change of price, rental or other conditions, withdrawal without notice, and to any special listing conditions imposed by our principals.