

**Available
Immediately.
Flexible terms !!!**

724 SF AVAILABLE FOR LEASE 600 NEWTOWN RD • VILLANOVA



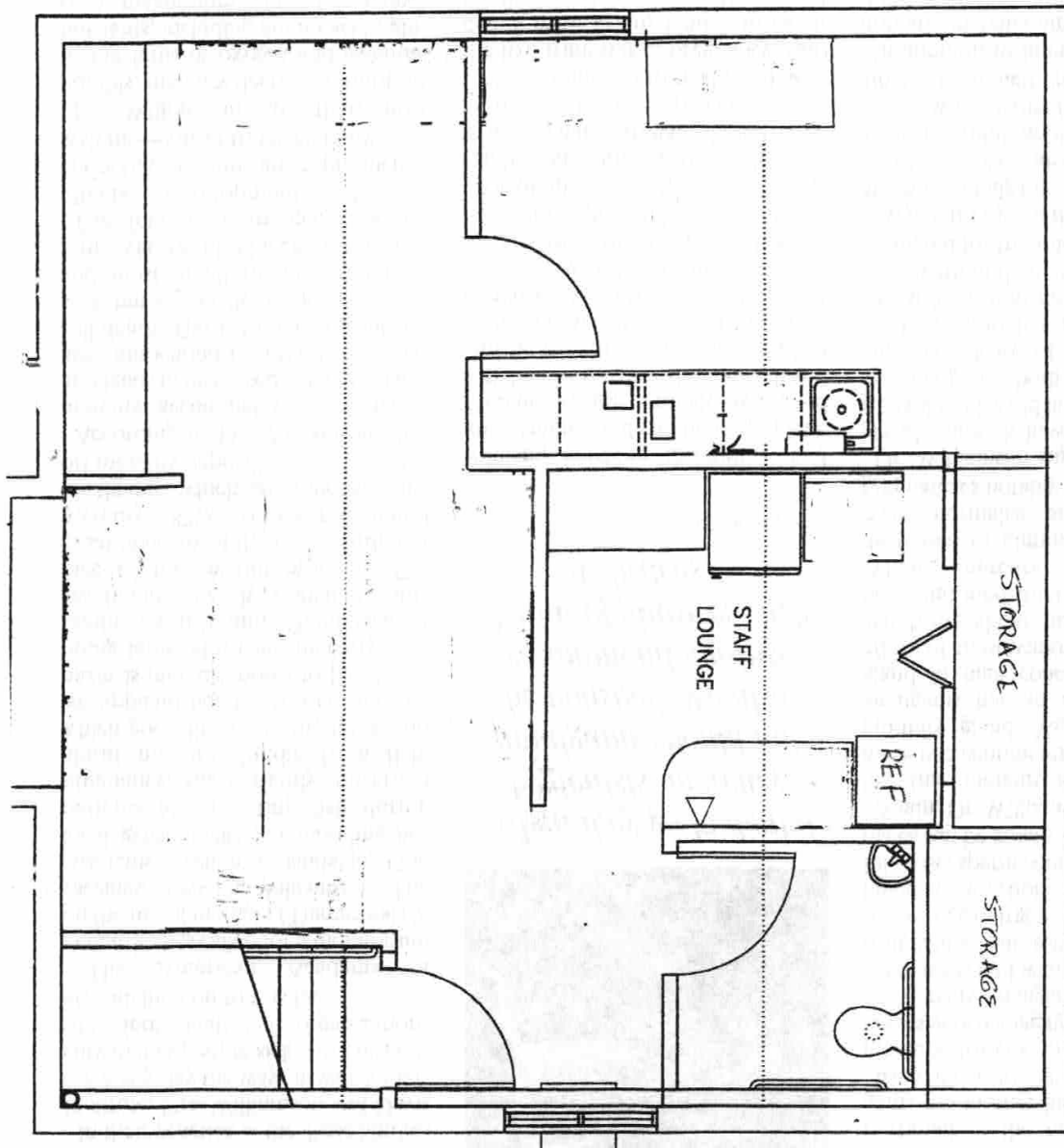
For More information contact: **Colin McHale, SIOR** cmchale@beaconcre.com | **610.828.0100**

290 King of Prussia Road | Building 1 | Suite 200 | Radnor, PA 19087 | 610.828.0100 (o) | 610.828.3873 (f) | www.beaconcre.com

No warranty or representation, expressed or implied, is made as to the accuracy of the information contained herein, and same is submitted subject to errors, omissions, change of price, rental or other conditions, withdrawal without notice, and to any special listing conditions imposed by our principals.

724 SF AVAILABLE FOR LEASE 600 NEWTOWN RD • VILLANOVA

724 SF office space available • Open office layout • Kitchenette
Perfect small office environment



For More information contact: **Colin McHale, SIOR** cmchale@beaconcre.com | **610.828.0100**

290 King of Prussia Road | Building 1 | Suite 200 | Radnor, PA 19087 | 610.828.0100 (o) | 610.828.3873 (f) | www.beaconcre.com

No warranty or representation, expressed or implied, is made as to the accuracy of the information contained herein, and same is submitted subject to errors, omissions, change of price, rental or other conditions, withdrawal without notice, and to any special listing conditions imposed by our principals.